



**BEDFORD COURT MANSIONS, ADELINE PLACE, LONDON, WC1B**  
**£1,100,000 LEASEHOLD**

**A STUNNING AND LARGE ONE BEDROOM FLAT IN THIS IMPRESSIVE AND HISTORICAL BLOOMSBURY MANSION BLOCK OPPOSITE BEDFORD SQUARE.**

Lease 167 years.

Service charge 8000 p/a to include heating hot water and sinking fund.

Ground rent is peppercorn.

Council tax is Band F 2589 Payable per annum.

West End | 020 7240 3322 | westend@winkworth.co.uk

**Winkworth**

for every step...

winkworth.co.uk



## DESCRIPTION:

The flat is on the first floor with lift access and has been refurbished to a high standard. This is truly one of the best one-bedroom flats to come to the market in this area. Bedford Court Mansions is between Tottenham Court Road and Gower Street. The property under licence has access to Bedford Square Gardens and is within walking distance to Tottenham Court Road tube station with Crossrail (now open). Holborn, Soho and Covent Garden are all close to the property, as is Kings Cross St Pancras and Euston Stations. UCL and ISE are near by making this flat a must-see opportunity to view



**Winkworth**

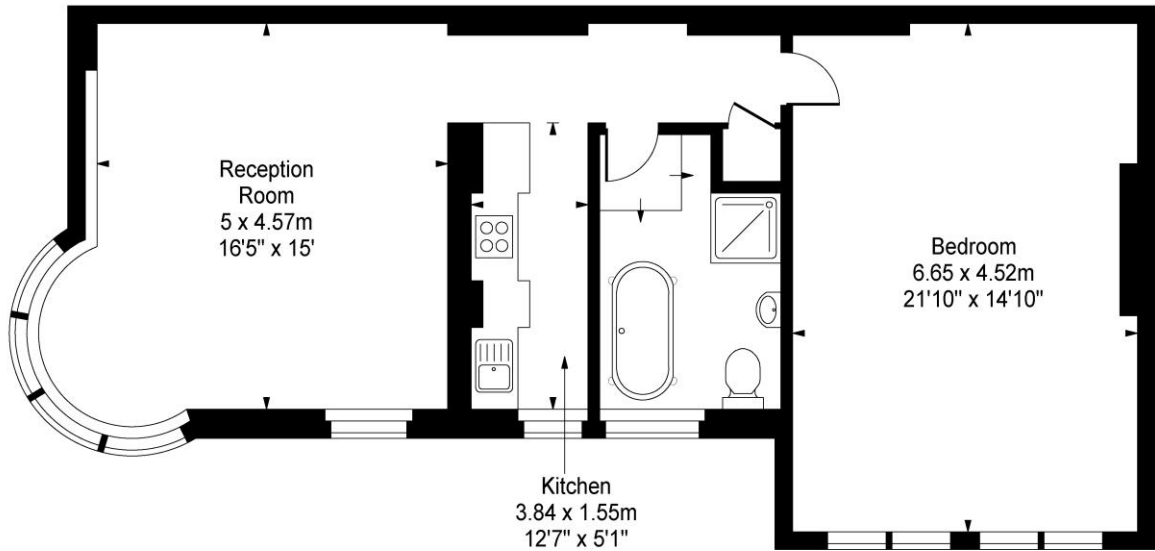
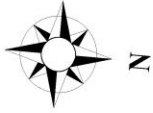
for every step...



**Winkworth**

for every step...

# Bedford Court Mansions, Adeline Place, WC1

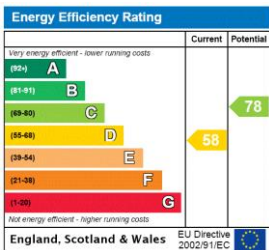


First Floor

Approx Gross Internal Area 836 Sq Ft - 77 67Sq M

This floor plan should be used as a general outline for guidance only and does not constitute in whole or in part an offer or contract. Any intending purchaser or lessee should satisfy themselves by inspection, searches, enquiries and full survey as to the correctness of each statement. Any areas, measurements or distances quoted are approximate and should not be used to value a property or be the basis of any sale or let.

This floorplan is for illustration purposes only and is not to scale. The position and size of doors, windows, appliances and other features are approximate.



West End | 020 7240 3322 | westend@winkworth.co.uk



for every step...

winkworth.co.uk

Winkworth wishes to inform prospective buyers and tenants that these particulars are a guide and act as information only. All our details are given in good faith and believed to be correct at the time of printing but they don't form part of an offer or contract. No Winkworth employee has authority to make or give any representation or warranty in relation to this property. All fixtures and fittings, whether fitted or not are deemed removable by the vendor unless stated otherwise and room sizes are measured between internal wall surfaces, including furnishings.